

SCS P-3201

Dip Coating System



The SCS P-3201 is a precision dip coating system for coating of printed circuit boards in a non-automated production setting. This system can be used to apply urethane, epoxy, silicone and acrylic coatings, as well as photoresists and solder mask materials.

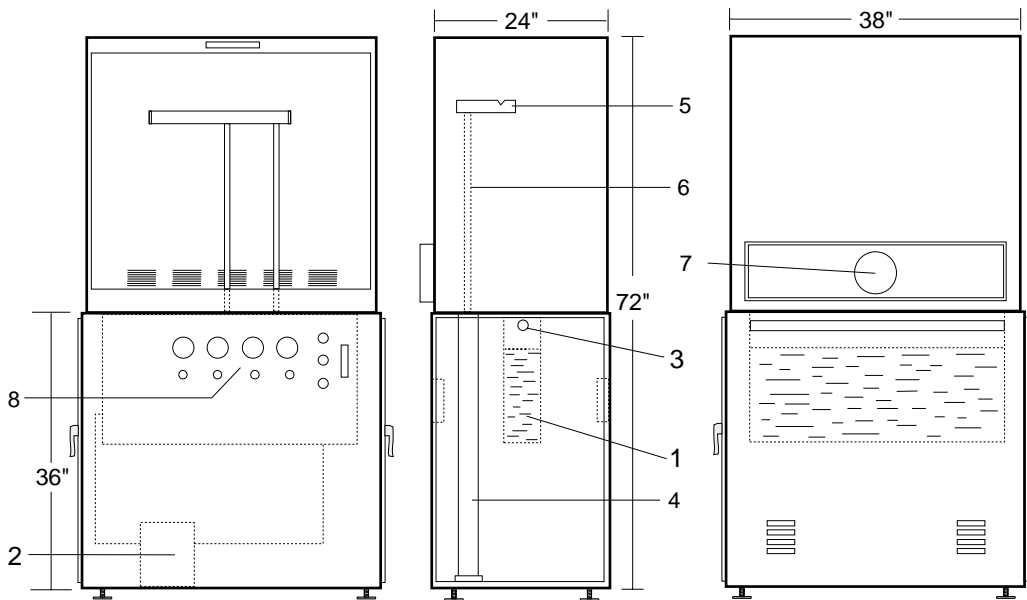
This efficient dip coating system uses a stationary tank and an air-over-oil cylinder mechanism to move circuit assemblies into and out of the coating. It meets National Fire Class I, Group D explosion-proof standards for a Division 1 environment. A stainless steel tank cover minimizes vapor loss.

The SCS P-3201 makes efficient use of coatings and ensures complete coverage on both sides of

coated assemblies. Accurate immersion control eliminates need to mask areas that remain above the dip line.

- Powered by compressed air cylinder for smooth, explosion-proof operation
- Adjustable immerse and lift speeds, 1-24 inches/minute
- Dip assembly supports multiple boards per dip cycle
- Removable tank for fast, easy coating changes
- Independently adjustable immersion and withdrawal rates

Dimensions



1. Dip tank
2. Circulation pump (optional)
3. Gas blanket manifold (optional)
4. Hydraulic actuation cylinder
5. Cross rod support rack
6. Lift travel control bar
7. Exhaust plenum
8. Control panel

Specifications

Unit size - 38"L X 25.75"W X 39"H
(96.5cm X 65.41cm X 99cm)

Tank size - 25"L X 7"W X 19"D
(63.5cm X 17.78cm X 47.5cm)

Tank drain - 1/2" (1.27cm)

Immersion capacity - up to 13" (33.0cm),
with 6" (15.2cm) freeboard

Immersion rate - 1 to 24 in./min
(2.54 to 61cm/min.)

Withdrawal rate - 1 to 24 in./min
(2.54 to 61cm/min.)

Dip Depth - adjustable by sensor position

Actuation - compressed air at 15cfm/80 psi
(25.5M³/hr./5.5bars), oil and moisture free

Exhaust - 200cfm (340M³/hr.)

Optional P-3201 Features

- Circulation Pump and Overflow Dam
- Stainless Steel Piping for circulation pump in lieu of brass piping
- 225 Micron Coating Filter (circulation pump option must be purchased with this option)
- Dip Dwell (0-60 seconds)
- Variable Extension Height (dip dwell option must be purchased with this option)
- Tank Air Blanket and Flow Meter
- Teflon Coated Tank
- Exhaust Hood Enclosure